

LINE

GLASS SKIN

concept

## GLASS SKIN

Skin is an office partition of superior performance. Conceptualized for high-end projects where robustness and minimalism are both required. It is a structural partition that gives the feeling that it is built only with glass, with no vertical profiles in sight.

The Glass Skin was developed in order to enable an acoustic performance of 40 dB Rw and up to 49 dB Rw without compromising the aesthetics.



GLASS SKIN  
concept

LINE

GLASS SKIN

## FLOOR AND CEILING TRACK

Glass Skin profile floor and ceiling track is 42.5 x 64.4mm. It is aluminum tracking with a 1.7mm thickness which includes 4x8mm adhesive.

GLASS SKIN  
concept

LINE



## GLASS SKIN

### GLASS MODULES

The male and female Glass Skin profile are each 54x33mm with a total thickness of 108mm.

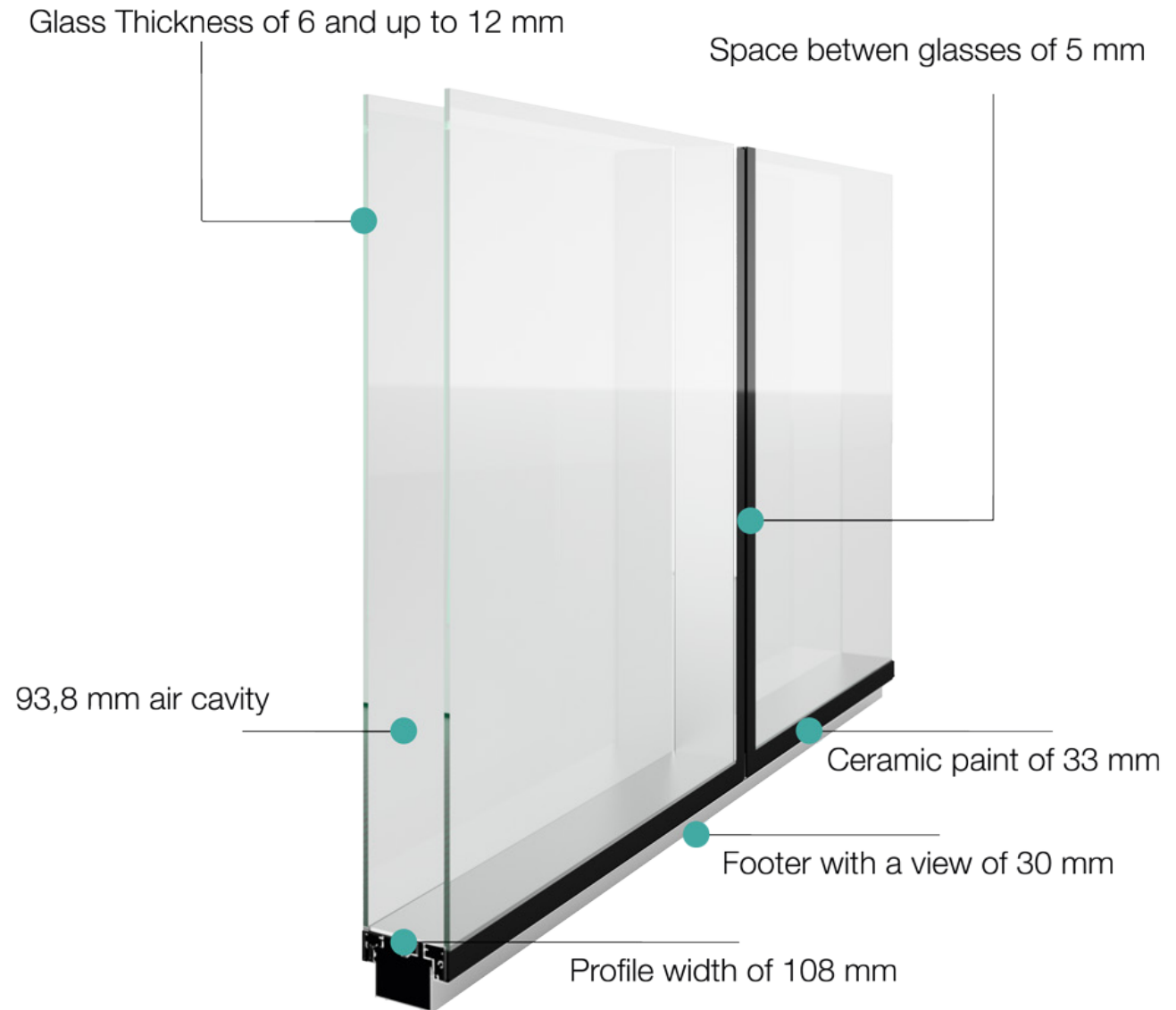
Thick aluminum of 1.5mm is used with 20x1 double sided adhesive 3M strip to accommodate the glass panels.

### GLASS

Two glass panels with a space between them of 93.8mm. They are 6mm and 8mm tempered glass both pieces are glass receive a ceramic paint on its frame (RAL colour to define)

GLASS SKIN  
concept

LINE



## GLASS SKIN

### DOOR

The door has a thickness of 108mm which is created in an aluminum frame with two pieces of tempered glass. One piece is 8mm thick which is placed on the outside of the room and the second 6mm on the inside, both pieces of glass are coated in ceramic paint.

Doors also receive double sealing rubber and an acoustic sealing brush to enhance performance.

GLASS SKIN  
concept



LINE

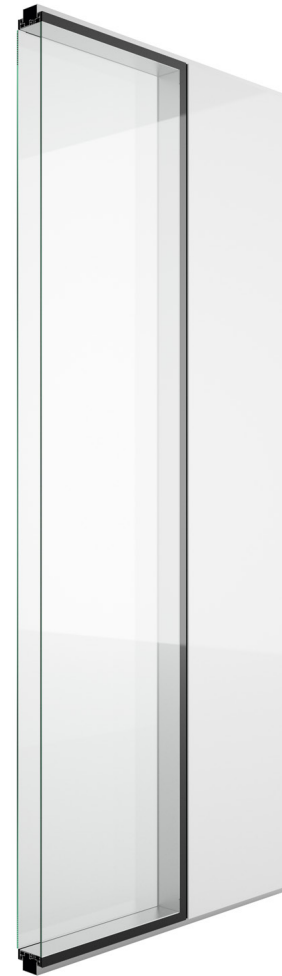


GLASS SKIN

**TECHNICAL DETAILS**



Glass Skin Modules



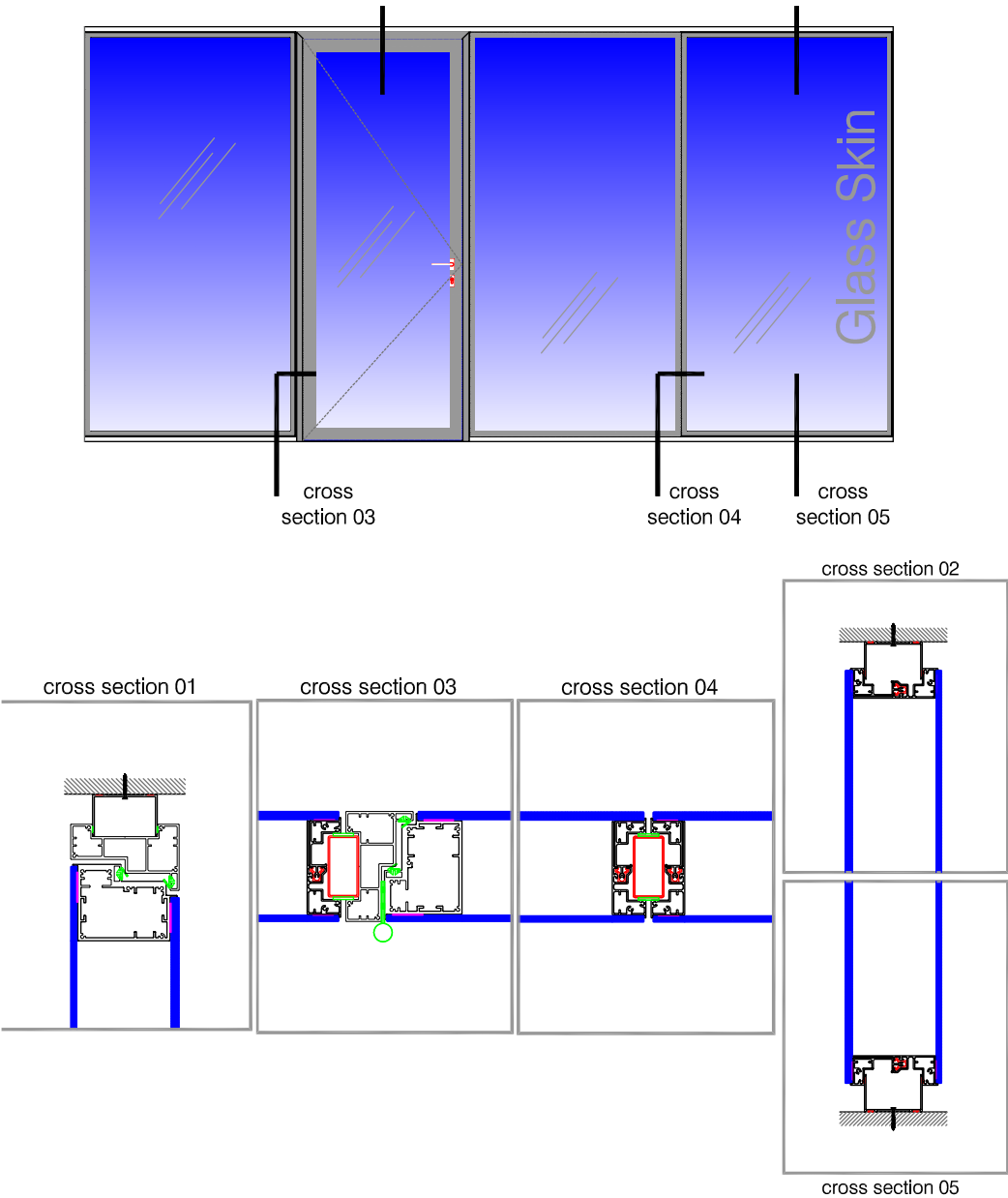
Glass Skin modules with PA 100 Opaque



Glass Skin Door

GLASS SKIN  
concept

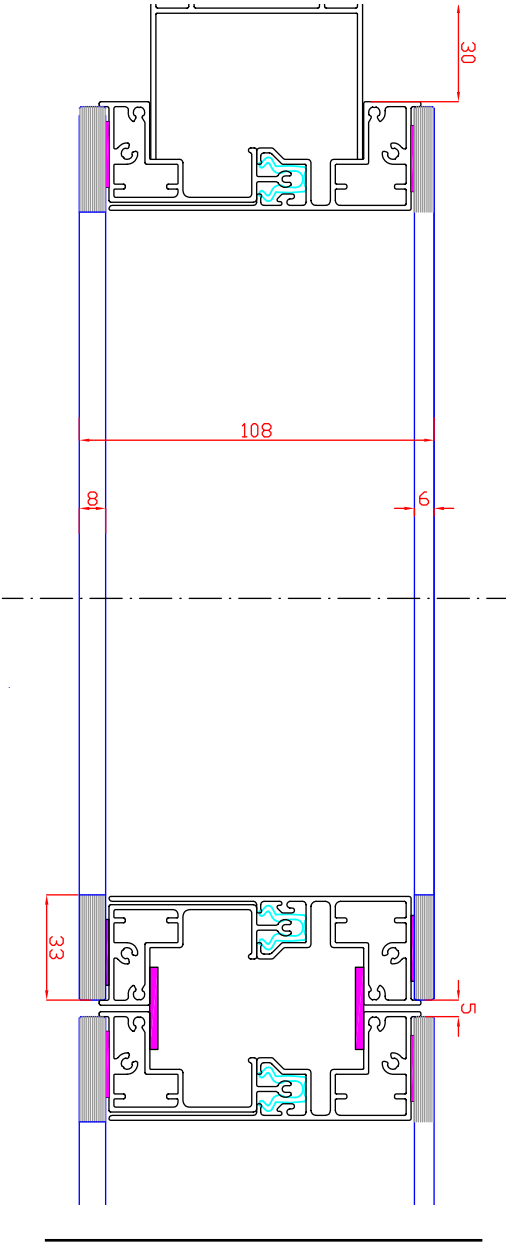
LINE



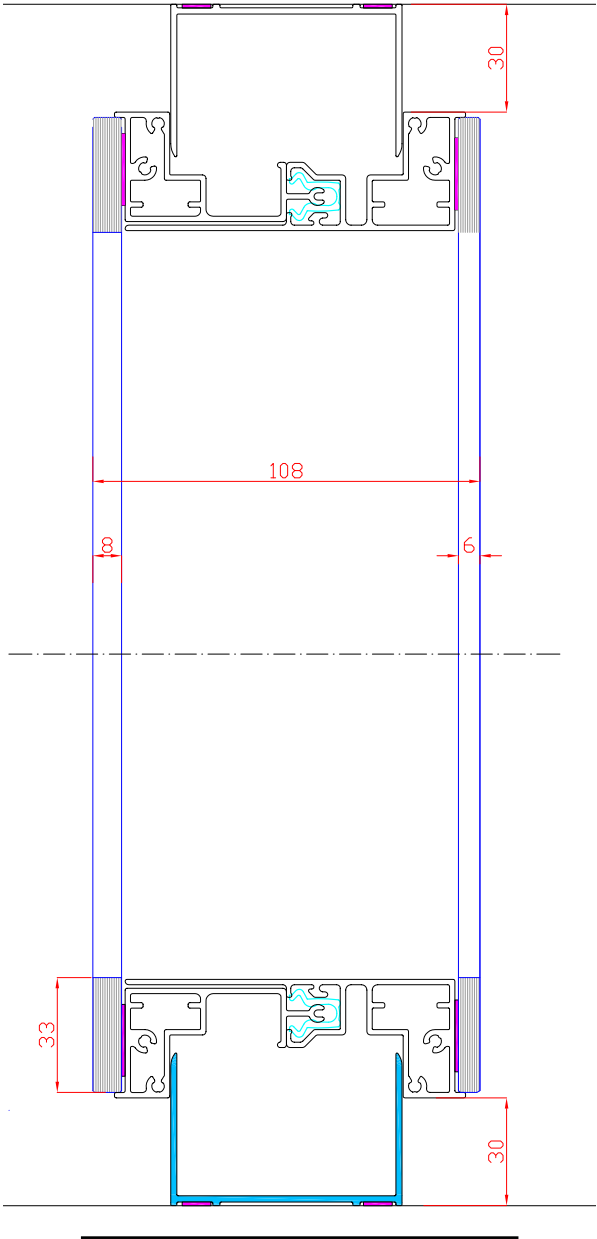
GLASS SKIN

TECHNICAL DETAILS

GLASS SKIN  
concept

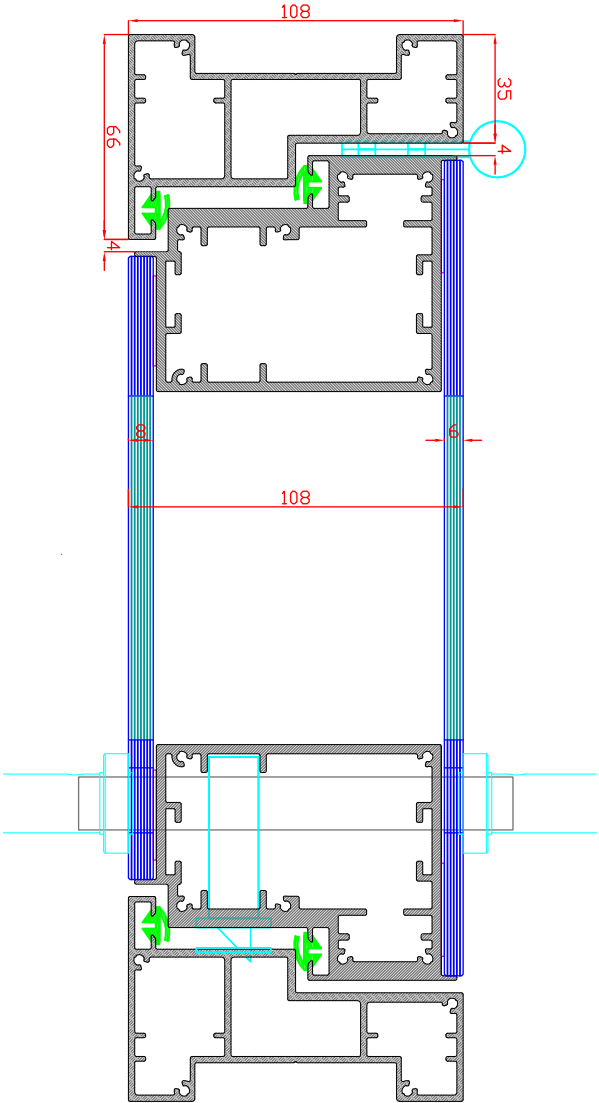


Glass Skin Horizontal Section



Glass Skin Vertical Section





Glass Skin Door Section



GLASS SKIN  
concept

LINE



[www.linesystems.eu](http://www.linesystems.eu)

# GLASS SKIN

## CUT SHEET



High acoustics meets European aesthetics maximized glass faces with minimal interruption simplified installation.

### PRODUCT FEATURES



Superior acoustics  
Back painted glass profiles to maximize glazed appearance  
Surface or recessed mounted  
20mm (3/4") standard installation tolerance

Double glazed with ceramic paint backing  
Integrated floor to ceiling pivot doors available as frameless, acoustic framed, or solid wood

### STANDARDS

Wall thickness:	108mm (4 1/4")
Minimum panel width:	200mm (8")
Maximum panel width:	1200mm (4')
Maximum panel height:	3000mm (10')
Top profile height:	30mm (1 3/16")
Bottom profile height:	30mm (1 3/16")
Sound Rating:	40-49

### GLASS THICKNESS

6mm-12mm (1/4"-1/2")

### STANDARD JOINT

Hidden mullion system

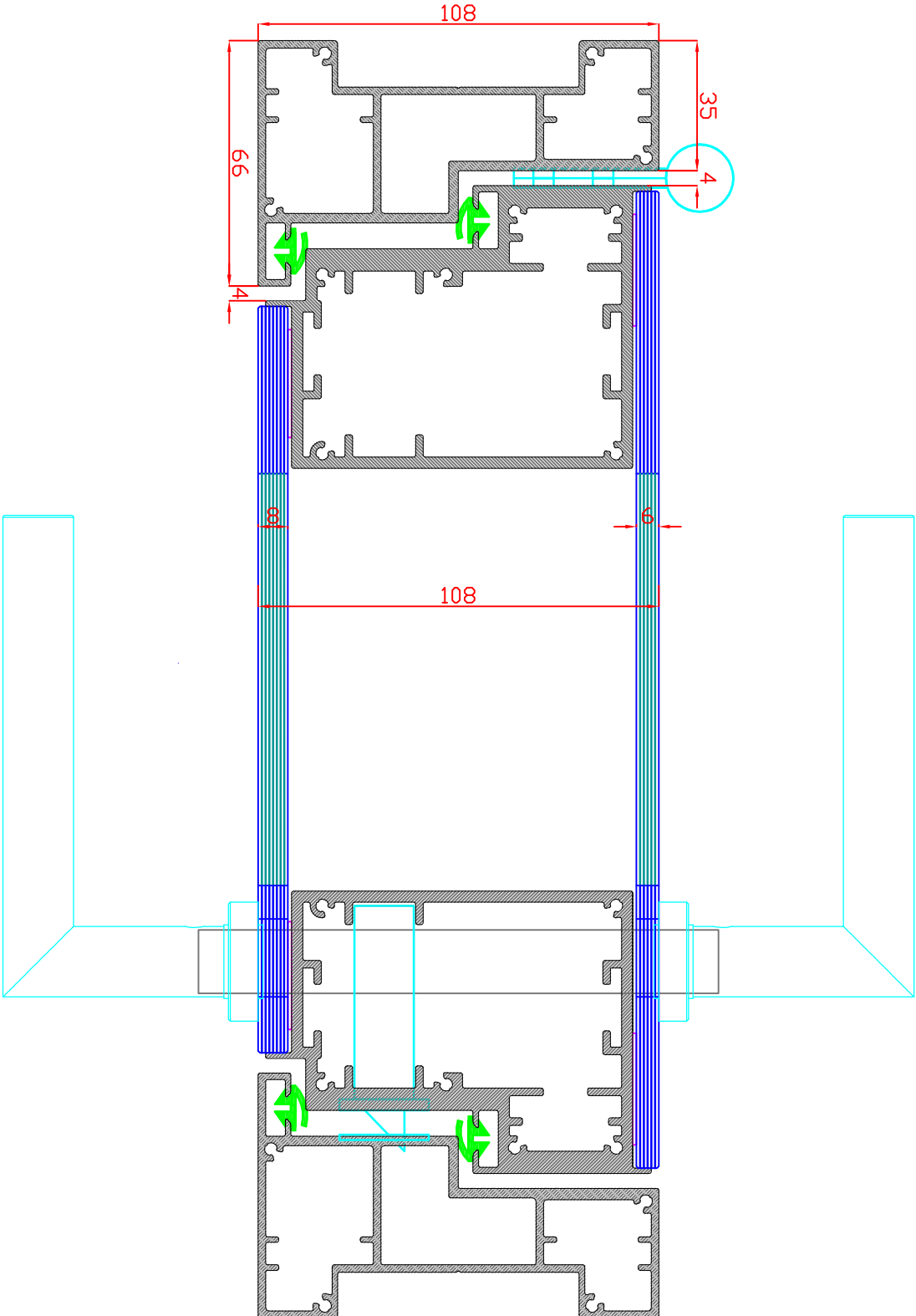
### STANDARD WARRANTY

5 year

### DOORS



Opaque Door 50mm (2")  
Single Glazed Door: 8mm (3/8")  
Glass Skin Door: 108mm (4 1/4")



**Project**

**Linesystems**  
- Glass Skin Door frame  
- 108mm door leaf ( double glass )

**Date:**

08.18

**Designer:**

PA

**Designer Review:**

DG / AG

**Description:**

Glass Skin door frame

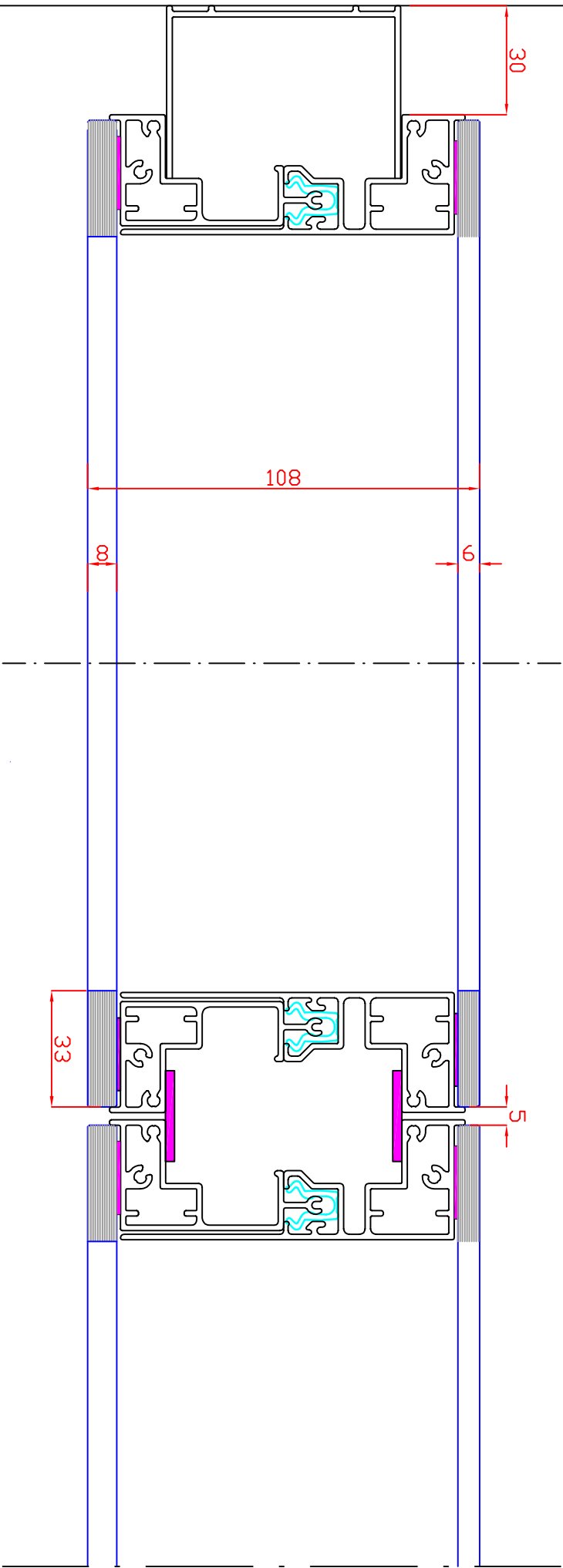
**Others:**

Draft - Not usefull for production

**Scale:**

Without scale





**Project**

**Linesystems**  
- Glass Skin\_Horizontal cut

**Date:**  
08.18

**Designer:**  
PA

**Designer Review:**  
DG / AG

**Description:**  
Glass Skin

**Others:**

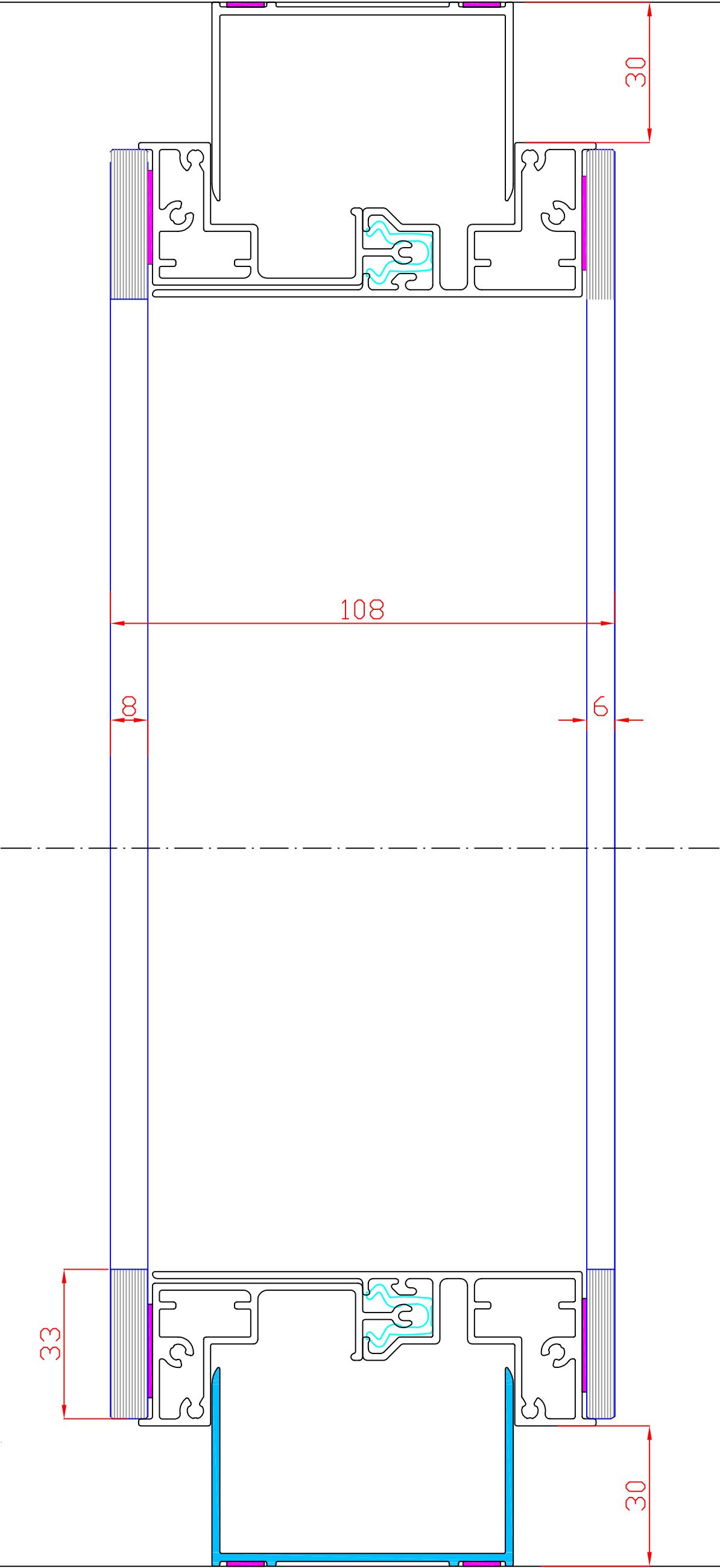
Draft - Not usefull for production

**Scale:**

Without scale



SYSTEMS



SYSTEMS

Project

Linesystems

- Glass Skin\_Vertical cut

Date:

08.18

Designer:

PA

Designer Review:

DG / AG

Description:

Glass Skin

Others:

Draft - Not usefull for production

Scale:

Without scale



